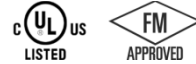


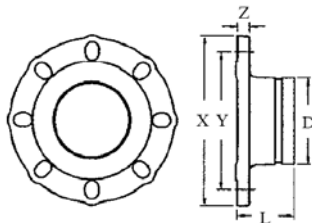
MODEL SS-80 STAINLESS STEEL UNIVERSAL FLANGE ADAPTER

The Model SS-80 Flange Adapter provides for a rigid transition between a grooved piping system and a flanged piping system or component. The SS-80 can mate to a variety of flange type including ANSI class 125/150, PN10 / PN16 and JIS 10K. The SS-80 is investment cast standard in grades CF8 (304) and CF8M (316). In addition the SS-80 is also available on request in CF3M (316L), 316Ti, 2205 Duplex and 2507 Super Duplex to meet your specific service requirement.

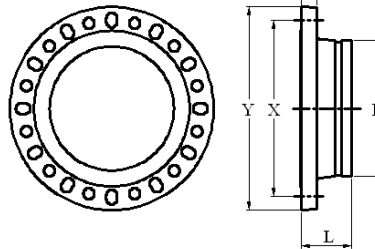


Shurjoint Model SS-80 pressure ratings conform to the working pressure of the coupling used to join the system.

For Fire Protection pressure rating, listing, and approval information, refer to Data Sheet B-42 or visit **SHURJOINT** website, www.shurjoint.com for details or contact your **SHURJOINT** Representative.



Size: 2" ~ 8"



Size: 10" ~ 12"



Full warranty terms can be found on www.shurjoint.com

Model SS-80 Stainless Steel Universal Flange Adapter													
Nominal Size	Pipe OD	L	X	Y: Flange Drilling				Z	Bolt				Weight
				ANSI 125 / 150	PN 10	PN 16	JIS 10K		ANSI 125 / 150	PN 10	PN 16	JIS 10K	
in	in	in	in	in	in	in	in	in	in	in	in	in	Lbs
mm	mm	mm	mm	mm	mm	mm	mm	mm	mm	mm	mm	mm	Kgs
2	2.375	2.50	6.50	4.75	4.92	4.92	4.72	0.63	5/8	M16	M16	M16	4.4
50	60.3	64	165	121	125	125	120	16	4	4	4	4	2.0
2½	2.875	2.75	7.28	5.50	5.70	5.70	5.50	0.63	5/8	N/A	N/A	N/A	6.4
65	73.0	70	185	140	145	145	140	16	4				2.9
76.1 mm	3.000	3.00	7.28	5.50	5.70	5.70	5.50	0.63	N/A	M16	M16	M16	6.6
	76.1	76	185	140	145	145	140	16		4	4	4	3.0
3	3.500	3.00	7.78	6.00	6.30	6.30	5.90	0.63	5/8	M16	M16	M16	7.5
80	88.9	76	200	152	160	160	150	16	8	8	8	8	3.4
4	4.500	3.00	8.66	7.50	7.09	7.09	6.89	0.63	5/8	M16	M16	M16	8.6
100	114.3	76	220	191	180	180	175	16	8	8	8	8	3.9
139.7 mm	5.500	3.00	10.00	8.50	8.27	8.27	8.27	0.87	N/A	M16	M16	M20	14.7
	139.7	76	254	216	210	210	210	22		8	8	8	6.7
5	5.563	3.50	10.00	8.50	8.27	8.27	8.27	0.87	3/4	N/A	N/A	N/A	14.7
125	141.3	89	254	216	210	210	210	22	8				6.7
165.1 mm	6.500	3.00	10.63	9.50	9.45	9.45	9.45	0.63	N/A	M20	M20	M20	15.0
	165.1	76	270	241	240	240	240	16		8	8	8	6.8
6	6.625	3.50	11.46	9.50	9.45	9.45	9.45	0.94	3/4	N/A	N/A	N/A	15.2
150	168.3	89	291	241	240	240	240	24	8				6.9
8	8.625	4.00	13.50	11.75	11.61	11.61	N/A	1.14	3/4	M20	M20	N/A	31.9
200	219.1	102	343	298	295	295		29	8	8	16		14.5
200 JIS	8.516	4.00	13.50	11.75	11.61	11.61	11.42	0.91	N/A	N/A	N/A	M20	30.8
	216.3	102	343	298	295	295	290	23				12	14.0
10	10.750	4.00	16.00	14.25	13.77	14.00	14.00	1.18	7/8	M20	M24	M22	49.6
250	273.0	102	406	362	350	355	355	30	12	12	12	12	22.5
12	12.750	4.50	19.00	17.00	15.75	16.14	N/A	1.26	7/8	M20	M24	N/A	65.9
300	323.9	114	483	432	400	410		32	12	12	12		29.9

Contact **Shurjoint** for other sizes.

MATERIAL SPECIFICATIONS

- **Fitting Body:**

Type 304 Stainless steel to ASTM A351 CF8 or A743 Gr. CF8

- Type 316 to ASTM A743 CF8M
- Type 316L to ASTM A743 CF3M
- Type 316Ti to ASTM A240.
- Duplex 2205 to ASTM A890 4A.
- Super Duplex 2507 ASTM A890 5A.
- Duplex 254SMO to ASTM A351 CK3McuN

General Notes:

- **Pressure Ratings** for fittings conform to the working pressure of the coupling used to join the system.
- **Listed and or Approved Pressures** are pressure ratings for fire protection systems, tested and approved by various approval bodies. Please always refer to the latest approval data posted on the **Shurjoint** website.
- **Field Joint Test:** For one time only the system may be tested hydrostatically at 1½ times the maximum working pressure listed (AWWA C606 5.2.3).
- **Warning:** Piping systems must always be depressurized and drained before attempting disassembly and or removal of any components.
- **The 10 Year Limited Warranty** applies to manufacturing defects only and does not cover severe service/temperature applications or wear parts.
- **Shurjoint** reserves the right to change specifications, designs and or standard without notice and without incurring any obligations.

Job Name:	System No.	Location:
Contractor:	Approved:	Date:
Engineer:	Approved:	Date:

Shurjoint product specifications in U.S. customary units and metric are approximate and are provided for reference only. For precise measurements, please contact Shurjoint Technical Service. Shurjoint reserves the right to change or modify product design, construction, specifications, or materials without prior notice and without incurring any obligations to make such changes and modifications on Shurjoint products previously subsequently sold.