

MODEL RH-1000 1000 PSI RING JOINT COUPLING

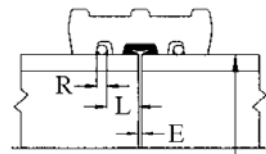
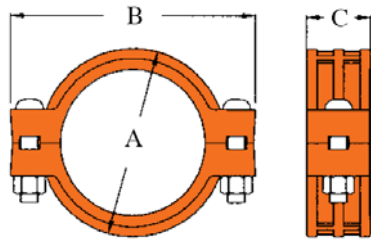
The **Shurjoint** Model RH-1000 coupling is a high pressure ring joint coupling for use with Sch. 40, Sch. 80 and heavier wall carbon steel pipelines.

The coupling is comprised of two ductile iron heavy-wall housings, rubber gasket (EPDM or Nitrile) and two heat-treated track bolts and nuts and provides a fully restrained joint with maximum working pressure up to 1,000 psi (70 Bar) depending on the pipe used.



RH-1000 couplings should always be installed so that the coupling bolt pads make metal to metal contact.

Two steel weld rings will be factory supplied with a coupling. Steel rings shall be always fully welded at both sides.



Pipe O.D.



Full warranty terms can be found on www.shurjoint.com

Model RH-1000 1000 PSI Ring Joint Coupling

Nominal Size	Pipe OD	Max. Working Pressure (CWP)*	ASME/ANSI Pressure Class Rating^ @100°F/@38°C	Max. End Load (CWP)	Dimensions			Bolt / Nut#	Deflection	Pipe-end Preparation			Approx. Weight
					A	B	C			R	L	E (max)	
in mm	in mm	PSI Bar	PSI Nom. Class	Lbs kN	in mm	in mm	in mm	No. Size in	Deg.	in mm	in mm	in mm	Lbs Kgs
8 200	8.625 219.1	1000 70	1000 400	58390 263.79	11.10 282	14.65 372	3.86 98	2 1" x 5½"	0° - 18'	0.472-0.500 12.0-12.7	1 25	0.13 3.2	39.8 18.1
10 250	10.750 273	1000 70	1000 400	90710 409.54	13.32 340	16.93 430	4.25 108	2 1" x 6½"	0° - 38'	0.472-0.500 12.0-12.7	1 25	0.13 3.2	57.2 26.0
12 300	12.750 323.9	1000 70	1000 400	127610 576.49	16.33 415	20.07 510	4.17 106	2 1" x 6½"	0° - 32'	0.472-0.500 12.0-12.7	1 25	0.13 3.2	72.6 33.0

*Working pressure is based on standard wall carbon steel pipe.

^The ASME/ANSI pressure class rating is not the design or maximum pressure rating, rather is provided for those that are accustomed to specifying or using ASME/ANSI pressure class rated components such as flange, valves, etc.

#Bolts & nuts are UNC threaded.

MATERIAL SPECIFICATIONS

- **Housing:**

Ductile Iron to ASTM A536 Gr. 65-45-12 and or ASTM A395, Gr. 65-45-15, min. tensile strength 65,000 psi (448 Mpa).

- **Surface Finish:**

Standard painted finishes in orange or RAL3000 red.

- Epoxy Coating. (Option).

- **Rubber Gasket:**

Grade "E" EPDM (Color code: Green stripe) Good for cold & hot water up to +230°F (+110°C). Also good for services for water with acid, water with chlorine, deionized water, seawater and waste water, dilute acids, oil-free air and many chemicals.

Not recommended for petroleum oils, minerals oils, solvents and aromatic hydrocarbons.

Maximum Temperature Range: -30°F (-34°C) to +230°F (+110°C)*.

*EPDM gaskets for water services are not recommended for steam services unless couplings or components are accessible for frequent gasket replacement.

- **Grade "T" Nitrile "EP" gasket** (Color code: Orange stripe) Recommended for petroleum products, air with oil vapors, vegetable and mineral oils within the specified temperature range. Also good for water services under +150°F (+66°C).

Temperature range: -20°F to +180°F (-29°C to +82°C).

Do not use for HOT WATER above +150°F (+66°C) or HOT DRY AIR above +140°F (+60°C).

For additional details contact *Shurjoint*.

- **Bolts & Nuts:**

Heat treated carbon manganese steel track bolts to ASTM A449-83a (or A183 Gr. 2), minimum tensile strength 110,000 psi (758 MPa), Zinc electroplated, with heavy-duty hexagonal nuts to ASTM A563.

General Notes:

- **ASME/ANSI Pressure-Temperature Rating** is provided as an aid in selecting a proper coupling to incorporate with other piping components (valves, flanges, and etc.) that are used in the same system and carry the ASME/ANSI rating. Select a Class 150 coupling to incorporate with Class 150 valves and flanges.
- **Maximum Working Pressure (CWP)** listed is the maximum cold water pressure for general piping services tested to ASTM F1476 and or AWWA C606 methods. Figures listed are based on standard wall carbon steel pipe. For other pipe schedules or pipe materials, contact *Shurjoint* for additional information.
- **Field Joint Test:** For one time only the system may be tested hydrostatically at 1½ times the maximum working pressure listed (AWWA C606 5.2.3).
- **Warning:** Piping systems must always be depressurized and drained before attempting disassembly and or removal of any components.
- **The 10 Year Limited Warranty** applies to manufacturing defects only and does not cover severe service/temperature applications or wear parts.
- *Shurjoint* reserves the right to change specifications, designs and or standard without notice and without incurring any obligations.

Job Name:	System No.	Location:
Contractor:	Approved:	Date:
Engineer:	Approved:	Date:

Shurjoint product specifications in U.S. customary units and metric are approximate and are provided for reference only. For precise measurements, please contact *Shurjoint* Technical Service. *Shurjoint* reserves the right to change or modify product design, construction, specifications, or materials without prior notice and without incurring any obligations to make such changes and modifications on *Shurjoint* products previously subsequently sold.